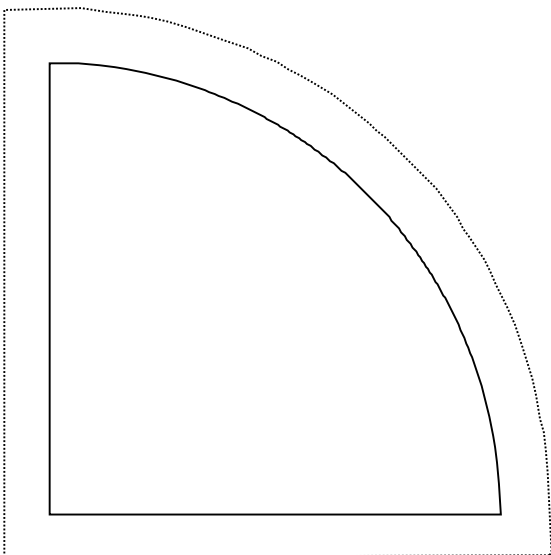
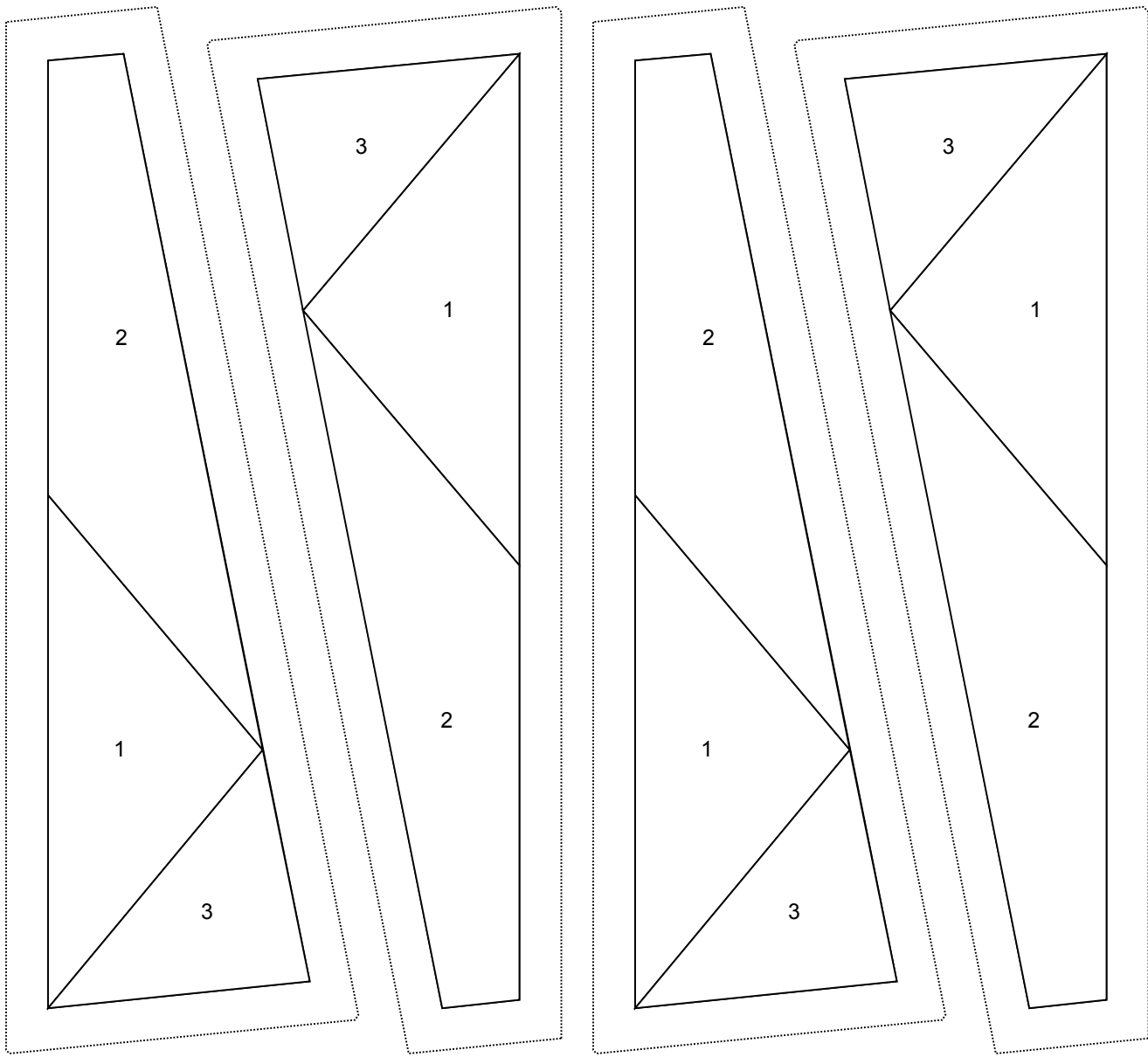
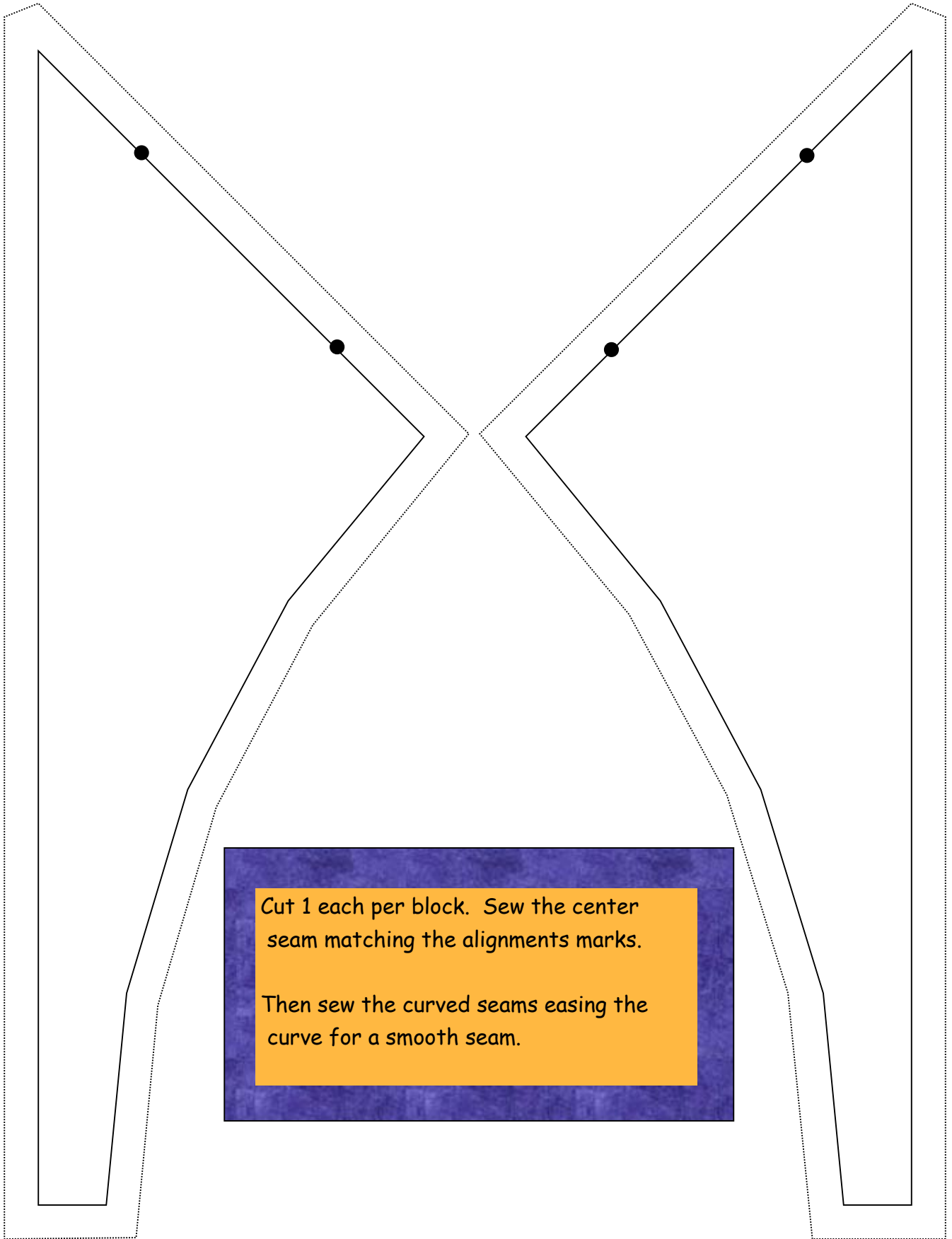


Circle Chase - 8.5" finished size



Print two pages for 8 fan blades in total for each block.
Sew foundations sections with the fabric on the blank side of the paper so the design will face in the correct direction, Then trim the seam allowances, and piece the 8 sections together.

Cut one pie shape per block. And sew to the already pieced Foundation sections. Ease the curve into the seam allowance to create a smooth seam.



Cut 1 each per block. Sew the center seam matching the alignments marks.

Then sew the curved seams easing the curve for a smooth seam.